

# CPS 5887/4 - Map Q

117°4'48"E

117°5'24"E

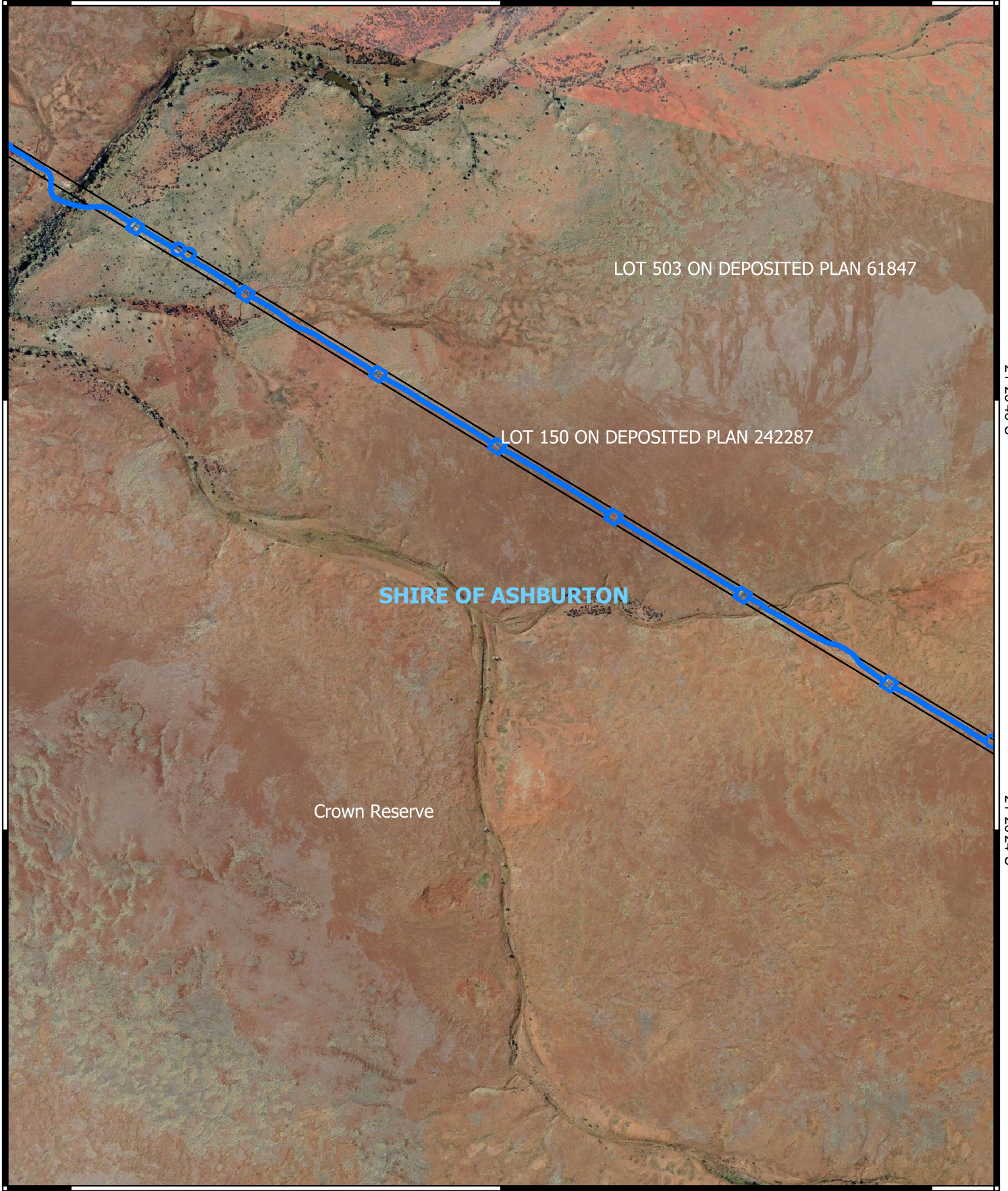
117°6'0"E

21°25'48"S

21°25'48"S

21°26'24"S

21°26'24"S


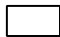



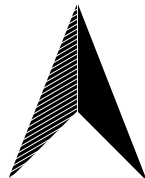
117°4'48"E

117°5'24"E

117°6'0"E

## Legend

-  CPS areas applied to clear
-  Land Tenure (LGATE\_226) - SLIP
-  Local Government Authorities



0 100 200 300 400 m



Projection: GDA 2020

1:10,000



GOVERNMENT OF  
WESTERN AUSTRALIA